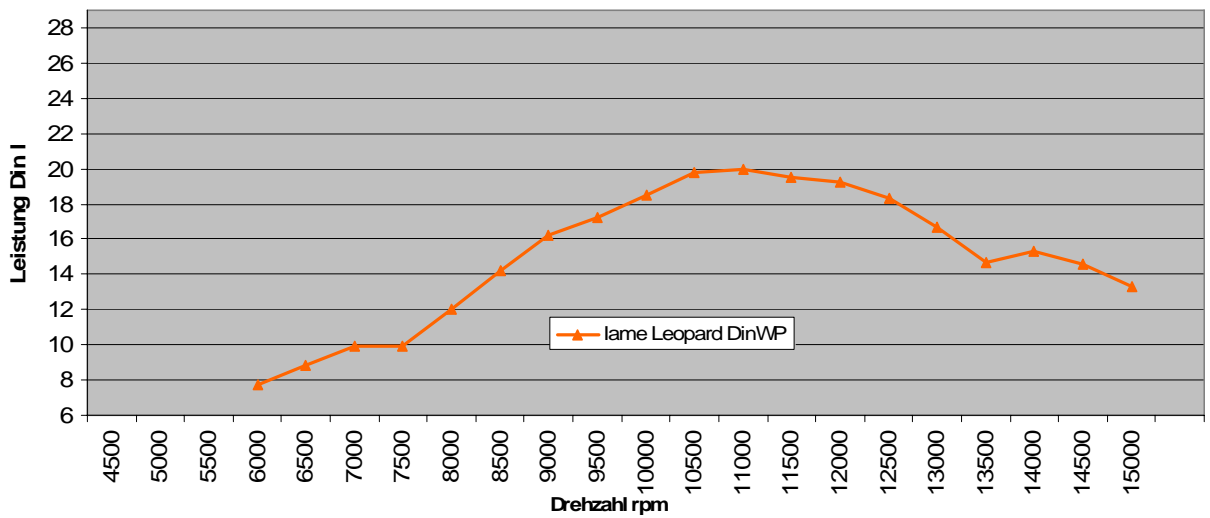


Iame Leopard



rear wheel power

Iame Leopard DinWP

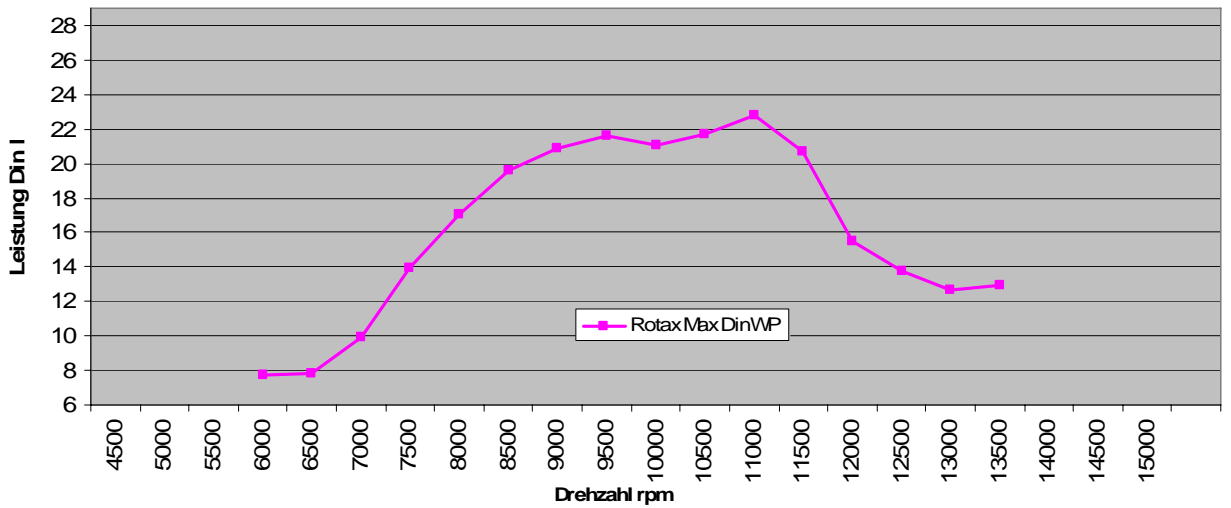


Rotax Max



rear wheel power

Rotax Max DinWP

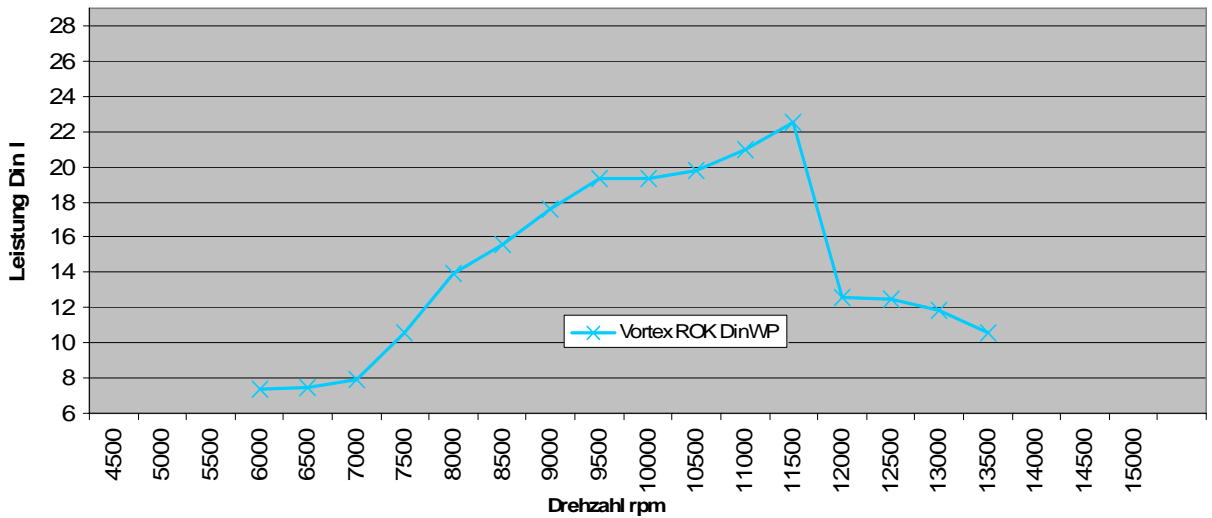


Vortex Rok



rear wheel power

Vortex ROK DinWP

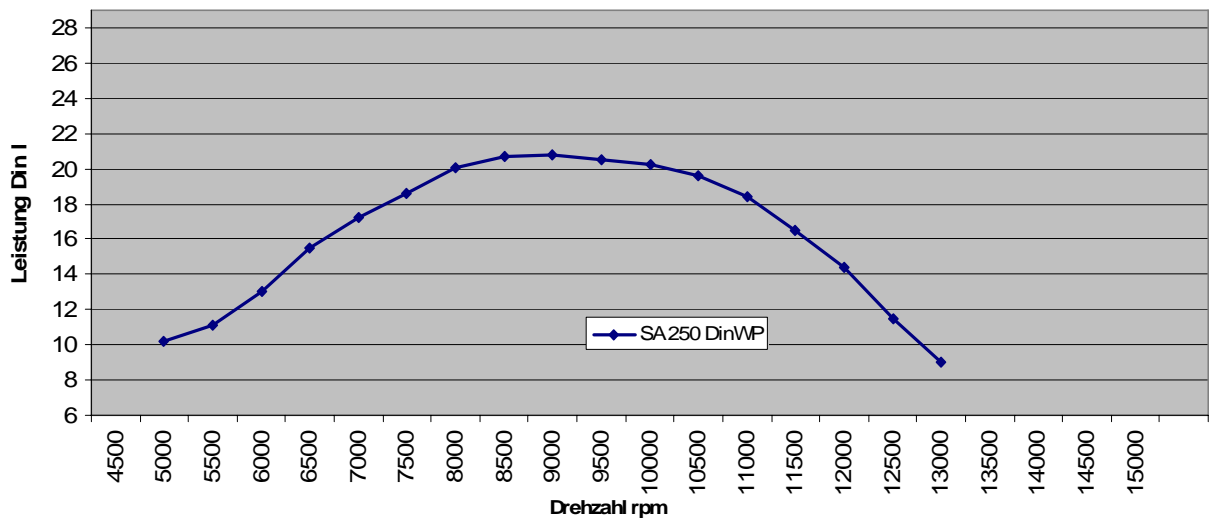


SA 250 Biland



rear wheel power

SA 250 DinWP

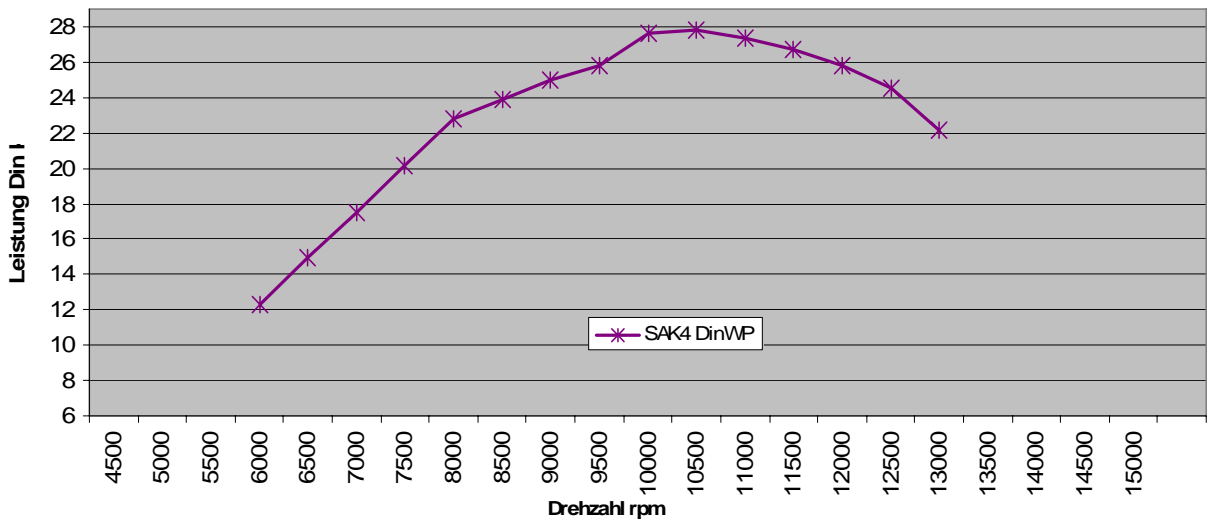


swissauto 250

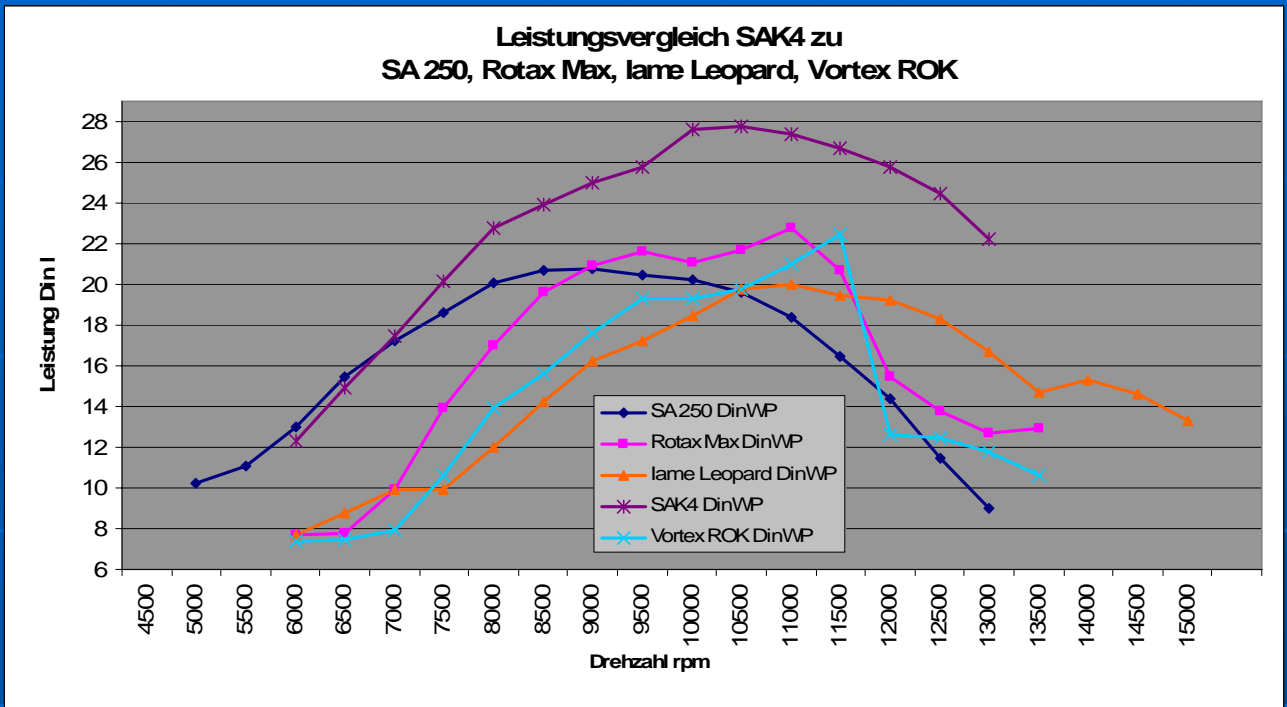


rear wheel power

SAK4 DinWP



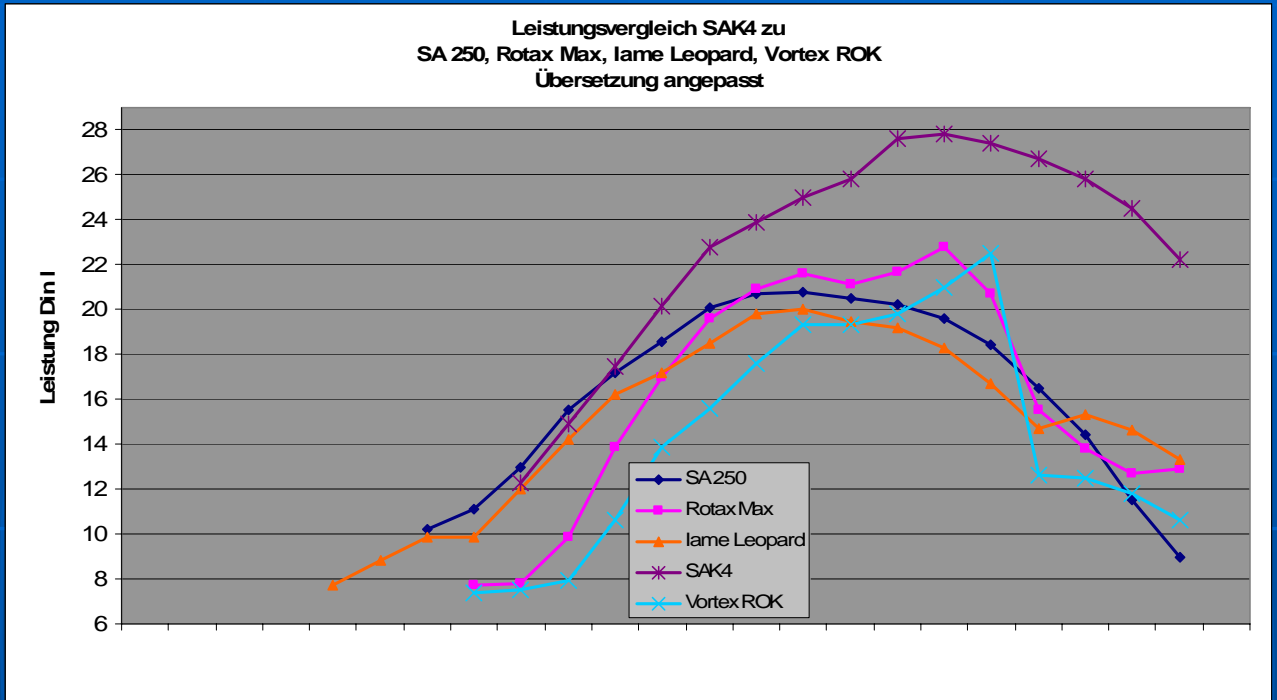
rear wheel power comparison



total weight comparison

Iame Leopard:	24,4 kg
swissauto 250:	25,8 kg
Rotax Max:	25,7 kg
Vortex Rok:	27,8 kg
SA 250 Biland:	28,8 kg

rear wheel power comparison geared to even top speed



total weight comparison

Iame Leopard:	24,4 kg
swissauto 250:	25,8 kg
Rotax Max:	25,7 kg
Vortex Rok:	27,8 kg
SA 250 Biland:	28,8 kg